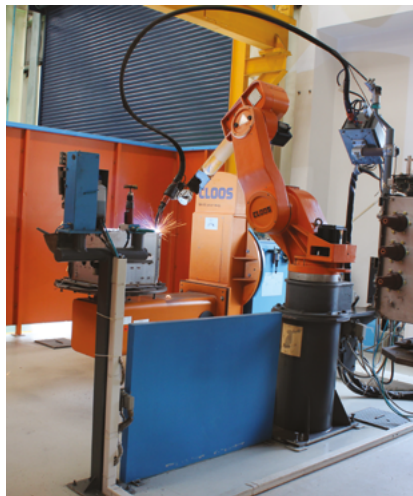


Business profile



About us

The team at Lucy Electric are experts in secondary distribution and automation solutions, enabling the safe, efficient and reliable delivery of electricity to homes and businesses worldwide.

We use our engineering excellence to design and manufacture high quality, best-in-class, ring main units, switchgear products and services tailored to meet our customers' needs. Working at the forefront of developments in the industry, our experienced engineers design and deliver network automation projects from concept to deployment, completing an end to end solution through the operational life cycle.

Innovation is vital to our business and during 2015 our investment in research and development increased as we continue to create high performance solutions at the cutting edge of switchgear design.

With over 100 years' industry experience, we understand the challenges our customers face now and in the future. Our focus is to work in partnership with our customers and we respond quickly and effectively, always looking for the best solution.

Our vision

To be the leader in engineering intelligent switchgear solutions through excellence in customer service and innovation.

Our heritage

Lucy Electric is part of W Lucy & Co. Ltd, an international Group of four diversified businesses. Established in 1812 the company has grown over an unbroken timeline to include specialist businesses in street lighting control; iron, aluminium and copper castings; real estate management; as well as medium and low voltage switching and automation solutions for secondary electrical distribution systems.

The Group employs over

1,300
people worldwide

Annual turnover, over

£200m



Experts in distribution network automation

As distribution networks become more complex, network operators are increasingly looking to automation solutions to help them maximise existing assets, reduce faults, minimise losses and maintain power quality.

Lucy Electric is an expert in secondary distribution network automation with an extensive range of products and services designed to deliver enhanced network intelligence, the highest levels of operational efficiency and easy flexible upgrades to meet our customers' changing needs.

Our highly experienced engineers work at the forefront of design and implementation for automation projects, advising customers from concept to delivery and offering a full range of post implementation services.

From retrofit solutions, which enhance the existing asset base, to the latest generation, automation-ready ring main units, remote terminal units, SCADA, Distribution Management Systems (DMS) and low voltage (LV) monitoring systems, for both underground and overhead networks, our extensive range of products and services provide everything our customers need to efficiently and cost effectively automate their distribution network

Cyber security of distribution automation systems is a challenging and necessary component of the solutions we deliver. From the operating systems and application code running within our Remote Terminal Unit (RTU) products to the communications infrastructures we deploy, we take every possible step to ensure that the systems are secure and resistant to attack. Our experts are constantly keeping up to date with the latest threats and, if necessary, we release timely updates to maintain the integrity of our products.

Network management solutions

Lucy Electric's network management solutions deliver robust control and monitoring of medium voltage networks. The range includes both Distribution Management Systems (DMS) and Supervisory Control and Data Acquisition (SCADA) systems, giving customers an enhanced overview and the ability to remotely manage their network.

Working together the DMS and SCADA systems provide network operators with real-time network information and modelling to improve the overall operational efficiency of the network and rapidly locate and resolve faults.

Gemini 3 RTU

Our latest generation range of remote terminal units, Gemini 3, offers customers a highly flexible platform for advanced feeder automation. Delivering fast response and timely data, the unique modular design of the Gemini 3 allows flexibility and scalability to be built into network automation projects.

Using different plug-in modules the units can be configured from a simple monitoring-only device to a sophisticated high voltage (HV) multi-switch controller. The future-proofed design evolves to meet customers' changing needs by adding or upgrading individual modules, without the need to recalibrate.

The Gemini 3's secure, multi-stage switching sequences guarantee the safe operation of switchgear and units can be remotely accessed during support activities to ensure safe and reliable operation.

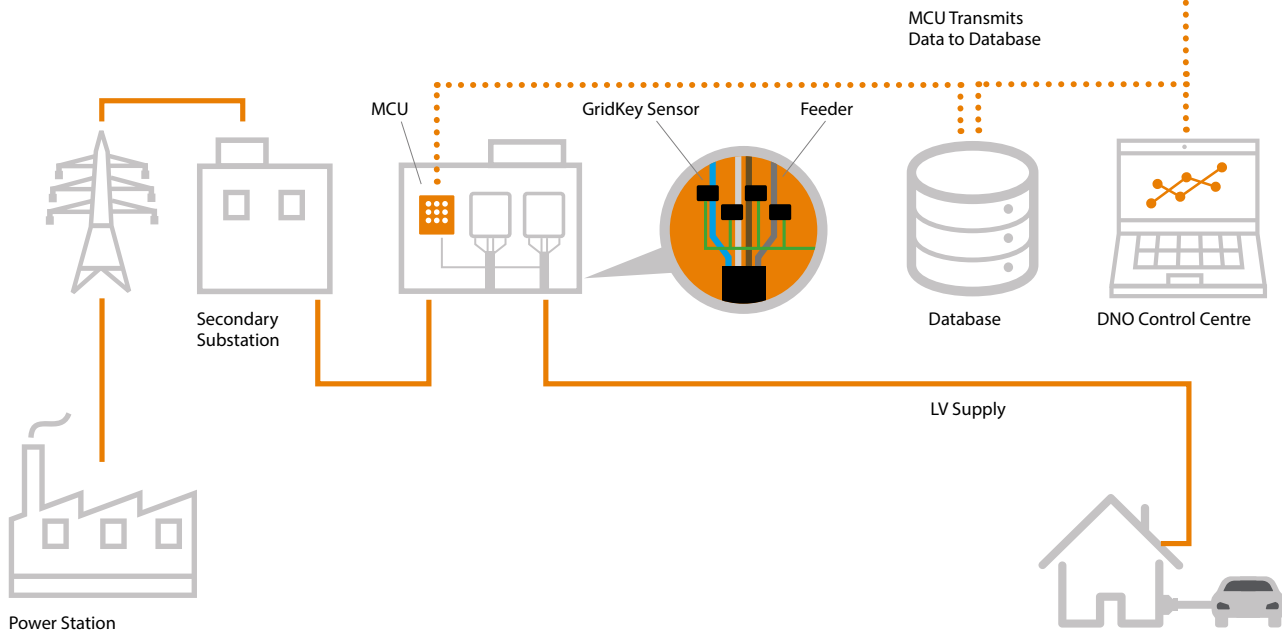
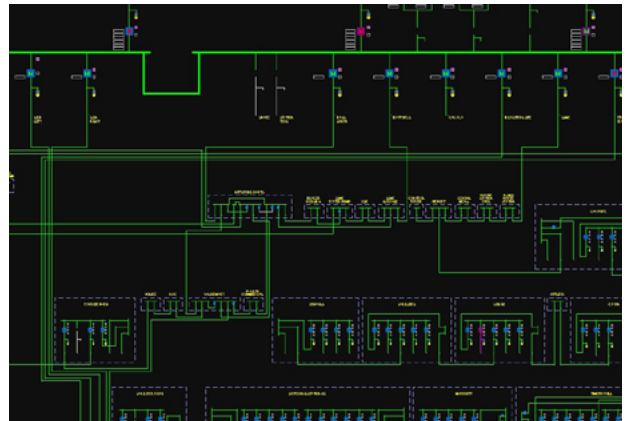




GridKey

Our solutions extend into low voltage monitoring via the GridKey range. GridKey is a world-leading LV continuous monitoring system which measures, communicates and stores real-time data, translating this into actionable information through a suite of analysis tools.

Using the information, distribution network operators are able to quickly diagnose, locate and resolve faults, better protect assets through planned maintenance and reduce capital and operational costs. The system allows operators to identify areas of concern across the LV distribution network, so that the stresses of load and voltage fluctuation can be proactively managed and power quality can be maintained.



Best-in-class switchgear solutions

Lucy Electric is a global leader in secondary power distribution solutions, specialising in high-performance switchgear for utility, industrial and commercial applications. With reliability, safety and value built in as standard, our best-in-class products are continually developed to anticipate changing market needs.

Medium voltage ring main units (RMU)

We are a market leader in the design and manufacture of high performance, medium voltage SF₆ gas and oil insulated RMUs for transformer or ground mounted applications. Suitable for both indoor and outdoor locations our RMUs are capable of operating in the most extreme environmental conditions. Our range includes:

Aegis Plus – SF₆ insulated compact and modular with vacuum circuit breaker protection, front cable termination, and 3 and 4 switching functions in a single stainless steel enclosure – 24 kV

Sabre – SF₆ insulated with vacuum circuit breaker protection, lateral and rear cable termination, fully weather proof with IP54 for outdoor applications – 24 kV

Trident – Oil insulated with fuse protection, lateral and rear cable termination. Designed for harsh and corrosive environmental conditions – 15.5 kV

High/medium voltage switch disconnectors

Our best-in-class range of high and medium voltage switch disconnectors include pole or structure mounted air break disconnectors and air and gas load break switches. The range includes:

Rapier AX – Air break switch disconnectors with 12 / 15.5 / 24 / 36 kV options

Rapier GX SF₆ – Enclosed load break switches with 15 / 26 / 38 kV options

Rapier DSB – Double side break switch disconnectors with options up to 145 kV

Low voltage distribution cabinets 415 V

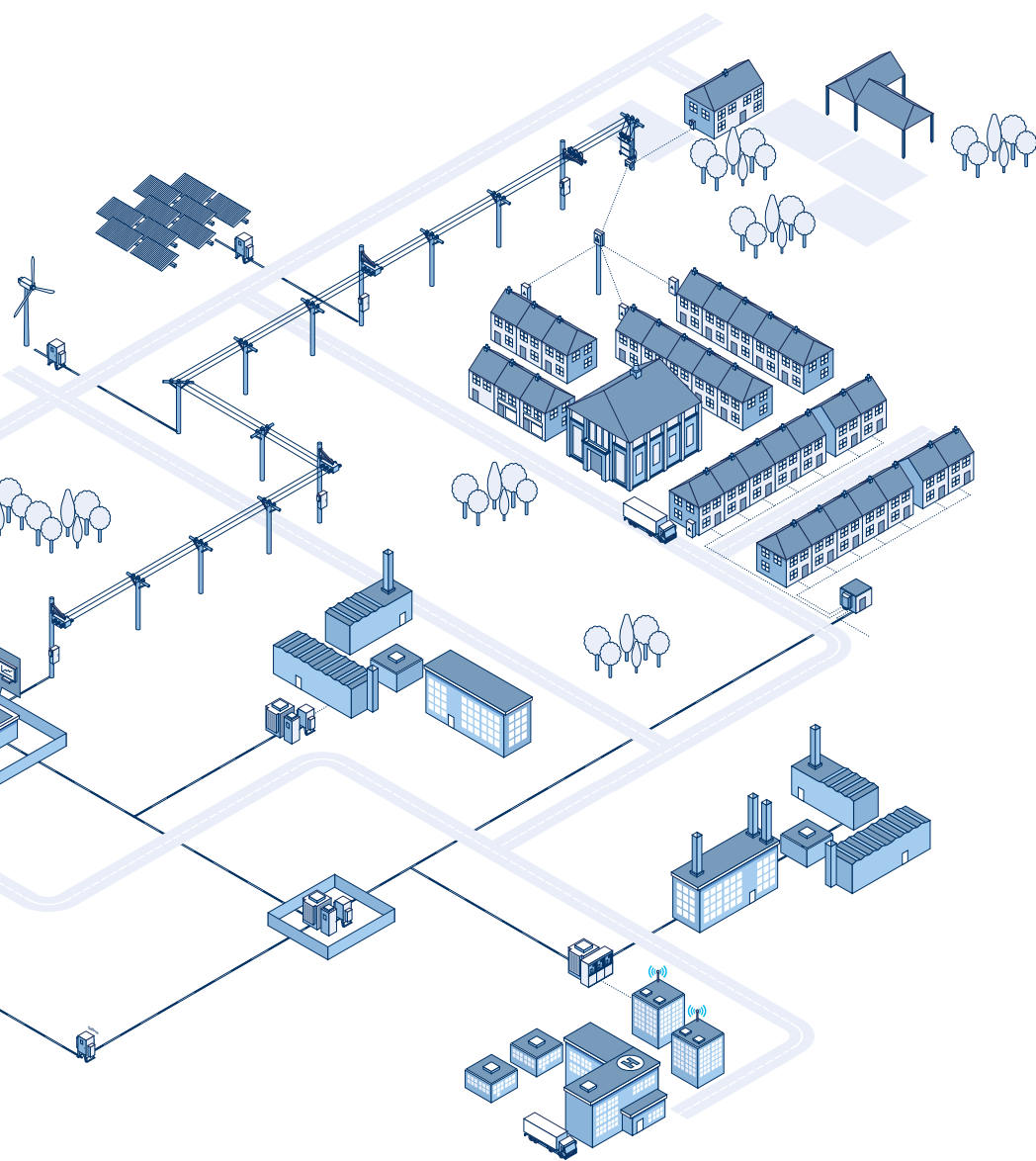
Our comprehensive product portfolio includes wall, ground and transformer mounting cabinets suitable for a variety of different applications. The cabinet features the enhanced safety Aculok fuse handle.

Low voltage cut outs

Providing a robust and durable solution for the vast majority of LV protection and distribution requirements up to 630 A, the cut out range offers robust performance, versatility and a service life in excess of 20 years. The range includes:

Pole mounted cut outs
Heavy duty cut outs
Outdoor house service cut outs
Indoor house service cut outs
Substation LV





Aegis Plus



Sabre



Gemini 3 RTU



Rapier GX

Whole life cycle approach to maximise your assets

Our expert Energy Services team works with our customers to help them make the most of their network assets across the whole product life cycle. We offer end-to-end solutions, from design and specification of projects through installation and commissioning, to whole life maintenance and product support.

From a simple service to a fully outsourced turnkey solution, our complete life cycle management approach ensures customers can maximise the value of their assets and make the most of their internal resources.

Our aim at Lucy Electric is to ensure that our customers consistently get the very best from our technology – and their budgets.

Whatever the market or commercial challenges, we work closely with you to find the right solution for the job to help plan for future challenges and opportunities.

Our range of services includes all aspects of consulting design and engineering; equipment supply, implementation and installation; operations and maintenance; data management and customer care.



Enhancing your capabilities

Our Skills Academy training centre offers customers a range of training courses in the management and maintenance of our switchgear and automation product range. With over 100 years' experience in the design and manufacture of switchgear and in excess of 500,000 ring main units installed globally, we have the knowledge and expertise to provide an exceptionally high level of training.

We offer focused classes in small training groups at both basic and advanced product training levels. Candidates gain hands on practical experience at an appropriate level for their knowledge base and have the opportunity for further academic training.

Courses can be delivered at customer sites or at our own facilities either within a classroom environment or in the practical training centre.

All Lucy Electric trainers are experts in installing, maintaining and operating Lucy Electric and other switchgear and automation manufacturer's products in the field.



Protecting our environment

We take our environmental responsibilities very seriously at Lucy Electric. We recognise that our operations have an impact on the local, regional and global environment within which people live and work, and that sustainable growth is only possible through careful stewardship of our impacts.

Developing environmentally sound products that provide maximum operator safety is fundamental to the success of our business. We make sure that all our site operations safeguard health, minimise energy use, emissions and waste, and conserve natural resources.

We regularly review our environmental performance and ensure it complies with all national environmental regulations, laws and codes of practice, as well as our internal Environmental Policy. Our Environmental Management System is ISO 14001 certified and the Certified Emissions Measurement and Reduction Scheme (CEMARS) independently verifies our greenhouse gas emissions management and reduction plan, in compliance with ISO 14064-1.

Business with integrity

Our Corporate Social Responsibility policy sets out the principles we follow and the programmes we have developed to focus on the areas where we have significant impact or influence.

As a responsible manufacturer built on our proud heritage and driven by strong principles, quality, value and integrity are at the heart of our business strategy. We believe in respecting the interests of all our stakeholders: partners, customers, suppliers and the wider community and we actively look for opportunities to improve the environment and to contribute to the wellbeing of the communities in which we trade.

We expect all of our employees to uphold the highest standards of business conduct and ethics during commercial operations, and to comply fully with all legal and regulatory requirements of the region in which the business operates.



Our global reach

Lucy Electric has an international presence with a strong local focus. Over the last few years we have invested significantly in infrastructure, developing centres for manufacturing and engineering excellence in regions across the world.

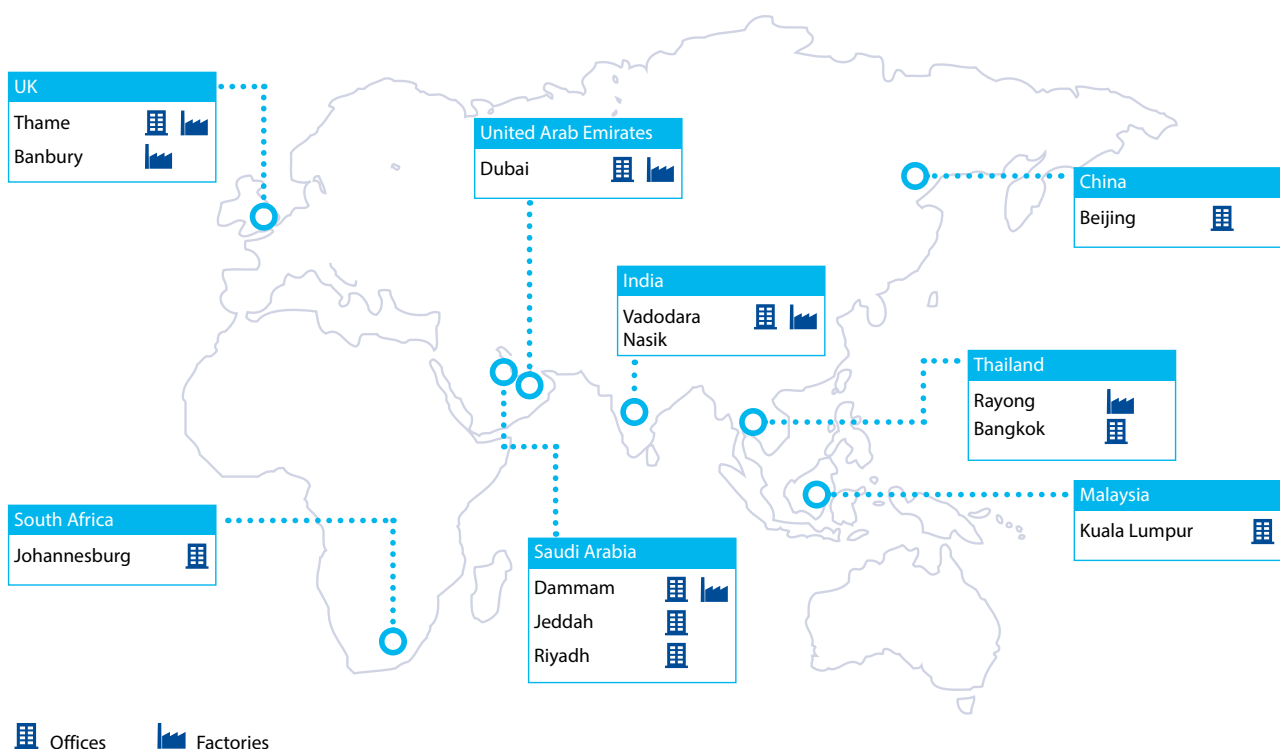
Our head office in Thame, Oxfordshire, is the centre of excellence for our engineering capabilities. Providing engineering design, specification and Energy Services to our customers and business partners worldwide.

Based in Dubai, our state-of-the-art, operational excellence centre manufactures and distributes Lucy Electric's best-in-class ring main units and overhead line equipment. This is supported by a number of sites in Saudi Arabia, India and the UK, manufacturing critical components for sub-assembly, overhead line equipment and providing final assembly for regional markets.

In 2014 Lucy Electric opened a new facility in Thailand, which manufactures ring main units and overhead line equipment for South East Asia and international markets, combining British technology, design and innovation with Thai manufacturing excellence.

In 2015 Lucy Electric acquired all Crompton Greaves (CG's) equity interests in CG Lucy Switchgear Ltd, an Indian company and changed its name to Lucy Electric India a medium voltage, secondary power distribution business unit. This is part of Lucy Electric's strategy to grow its business in developing markets and will allow the company to meet the growing demand for electrical infrastructure equipment and the development of smart grid projects in India.

Additionally we have offices in Saudi Arabia, United Arab Emirates, South Africa, Kenya, Ghana, China, Malaysia and Thailand and an established network of industrial partners, giving us a presence in over 30 countries worldwide.



**Providing products
and services to meet our
customers' requirements**



Get in touch

For further information relating to
Lucy Electric contact us at:

Lucy Electric
Howland Road
Thame
OX9 3UJ

t: +44 (0)1844 267267
e: salesuk@lucyelectric.com

Lucy Electric worldwide offices

Lucy Electric UK Ltd

Howland Road, Thame, Oxfordshire,
OX9 3UJ, United Kingdom
Tel: +44 1844 267 267 General
Tel: +44 1844 267 222 Sales
Fax: +44 1844 267 223
Email: salesuk@lucyelectric.com

Lucy Middle East FZE

PO Box 17335, Jebel Ali, Dubai,
United Arab Emirates
Tel: +971 48 129 999
Fax: +971 48 129 900
Email: salesme@lucyelectric.com

Lucy Electric (Thailand) Ltd

388 Exchange Tower, 37th Flr Unit 3702,
Sukhumvit Road, Klongtoey Subdistrict,
Klongtoey District, Bangkok,
10110, Thailand
Tel: +66 (02) 663 4290
Fax: +66 (02) 663 4293
Email: salesth@lucyelectric.com

Lucy Electric India Private Ltd

H21, MIDC
Ambad, Nasik 422010, India
Tel: +91 253 2381603
Fax: +91 253 2381247
Email: salesIndia@lucyelectric.com

Lucy Switchgear Arabia Co. Ltd

Novotel Business Centre,
P.O. Box 35340, Dammam 31488,
Saudi Arabia
Tel: +966 138 147 910
Fax: +966 138 147 914
Email: salessa@lucyelectric.com

Lucy Electric South Africa Pty. Ltd

Unit 12 & 13, Block C,
Honeydew Business Park,
1503 Street, Laser Park,
Honeydew, 2170, South Africa
Tel: +27 11 025 7490
Fax: +27 11 794 3277
Email: salesza@lucyelectric.com

Postal Address:
P.O. Box 1078, Honeydew, 2040

Lucy Asia Pacific Sdn Bhd

Unit 17-05-06, Level 17,
PJX-HM Shah Tower,
No.16 Persiaran Barat,
46050 Petaling Jaya,
Selangor, Malaysia
Tel: +603 74910700
Fax: +603 79316923
Email: salesmy@lucyelectric.com

Lucy Electric (Beijing) Co. Ltd

Room 1122, 11/F, Tower A,
Gateway Plaza, No 18 Xia,
Guang Li, North East Ring Road,
Chaoyang District, Beijing,
100027, China
Tel: +86 1059 231 176
Fax: +86 1059 231 177
Email: salesmy@lucyelectric.com

engineering intelligent solutions
www.lucyelectric.com



LECOR1016